

**APPENDIX B**  
**DEC Correspondence**

April 29, 2009

Margaret Duke  
New York State Department of Environmental Conservation  
Division of Environmental Permits  
21 South Putt Corners Road  
New Paltz, NY 12561-1696

**Subject: Proposed O&G Alternate Truck Route Alternatives Analysis, Nanuet, New York**

Dear Ms. Duke,

The City of Hudson is proposing to adopt a Local Waterfront Revitalization Plan and associated Zoning Code Amendments and is in the process of preparing a Draft Generic Environmental Impact Statement. As part of the environmental review process the City is also conducting an analysis of potential truck route alternatives for the O&G mining operations. The City, through the Comprehensive Plan and LWRP, has established eliminating dump truck traffic destined for the Holcim deep water port located on the Hudson River and traversing Columbia and Front Streets as imperative for the health, safety and welfare of residents and businesses living and operating along this truck route. This truck traffic is generated by O&G Industries as it transports aggregate produced at the Holcim U.S., Inc. quarry, located in Greenport, New York, on its way to the deep water port. The LWRP includes nine possible alternatives to the existing truck route.

One of the alternatives involves the provision of a new road through the LB Furniture Products property located at 99 South 3<sup>rd</sup> Street. This site is identified on DEC's wetland maps as a wetland "check zone" as it is located adjacent to existing mapped wetlands in the South Bay area. The LB Furniture property is developed with a warehouse building and parking lot, but under one of the proposed alternatives for the site, a new road may be installed in the undeveloped portion of the site adjacent to Route 9G. We are writing on behalf of the City to request information and comments from the Department of Environmental Conservation regarding any significant vegetation, wildlife, or wetlands on or proximate to the site.

Enclosed please find the following materials for your reference:

1. Regional Location Map
2. LWRP Area
3. Aerial showing the site, alternative truck route and surrounding area.

Thank you in advance for your attention to this request. Should you have any questions or need additional information, please do not hesitate to contact me at 212-353-7375 or via e-mail at [s.yackel@bfjplanning.com](mailto:s.yackel@bfjplanning.com)

Sincerely,



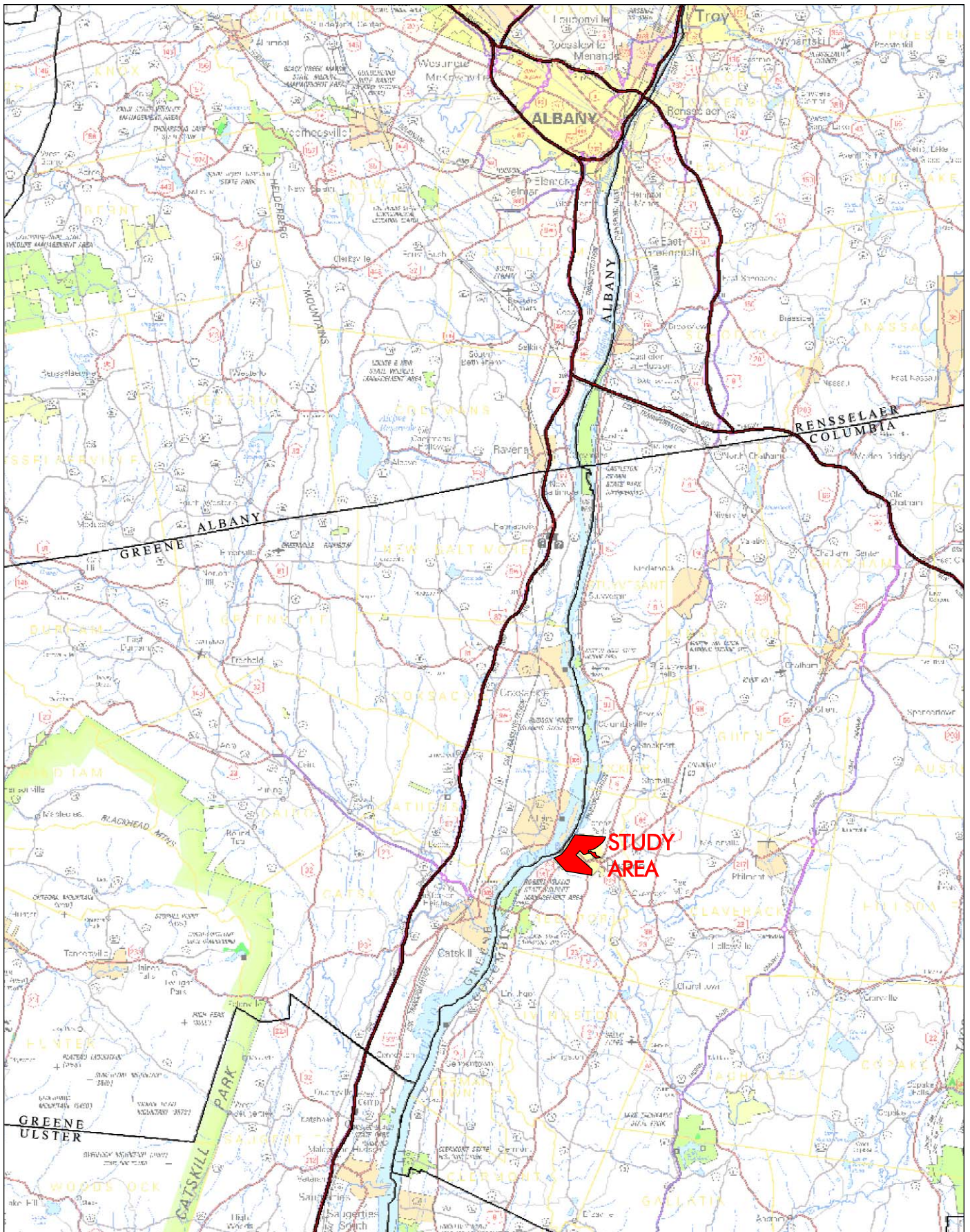
Sarah K. Yackel, AICP  
Associate

CHARLOTTE  
CHICAGO  
NEW YORK CITY  
PITTSBURGH  
STAMFORD

PAUL BUCKHURST ARIBA, AICP  
FRANK S. FISH FAICP  
GEORGES JACQUEMART PE, AICP

BUCKHURST FISH  
& JACQUEMART, INC.  
115 FIFTH AVENUE  
NEW YORK, NY 10003  
T. 212.353.7474  
F. 212.353.7494

[WWW.BFJPLANNING.COM](http://WWW.BFJPLANNING.COM)



HUDSON LWRP DRAFT GEIS

HUDSON, NEW YORK

REGIONAL SETTING



0 5 miles

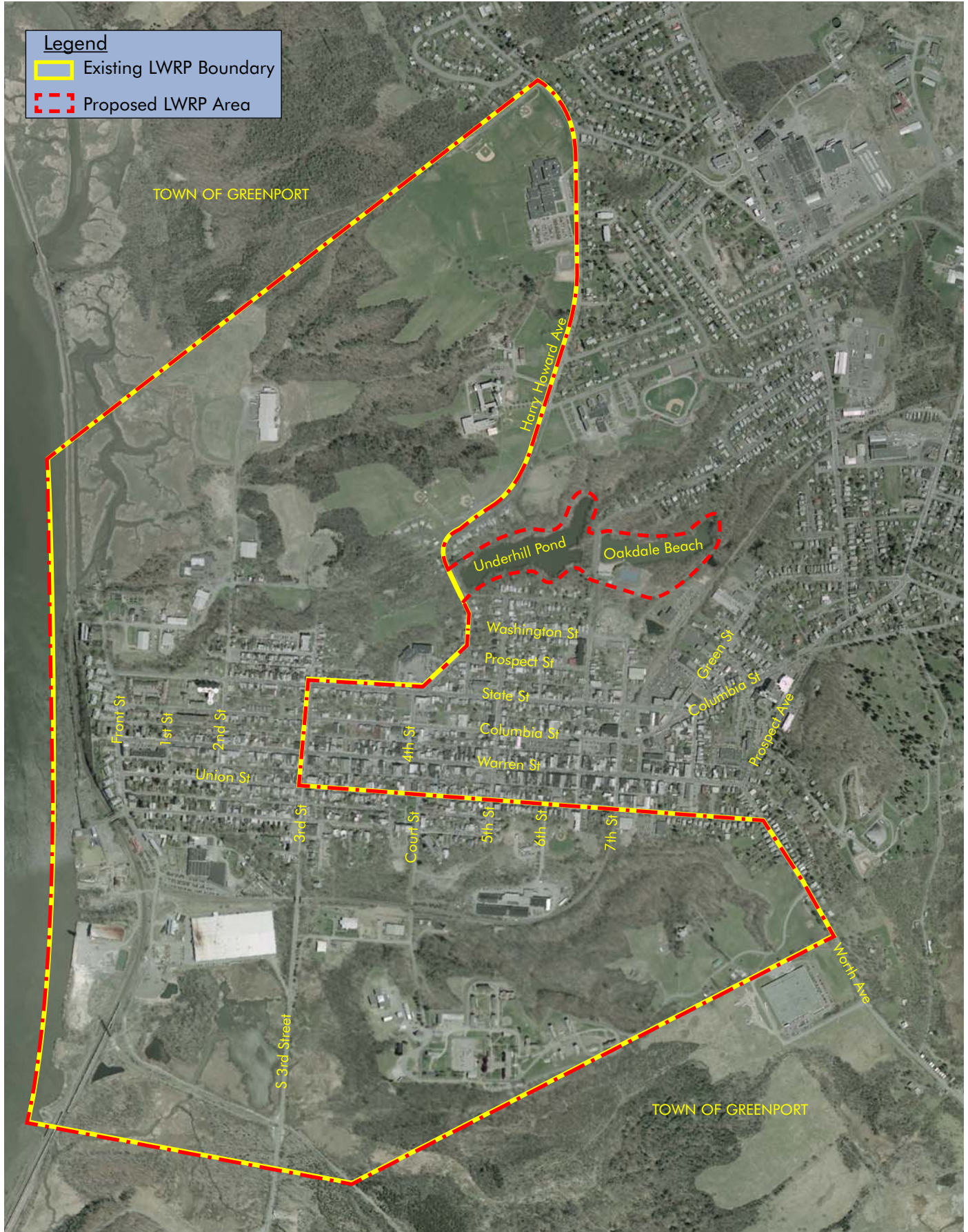
SOURCE: NYS GIS



BEJ Planning

**Legend**

-  Existing LWRP Boundary
-  Proposed LWRP Area





— Alternative Truck Route

HUDSON LWRP

City of Hudson, New York