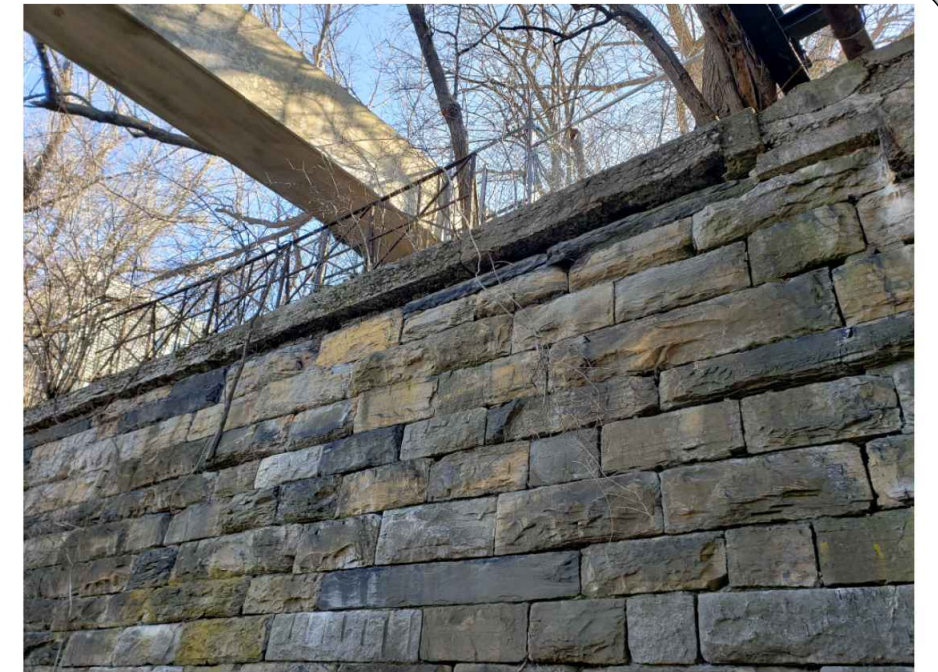
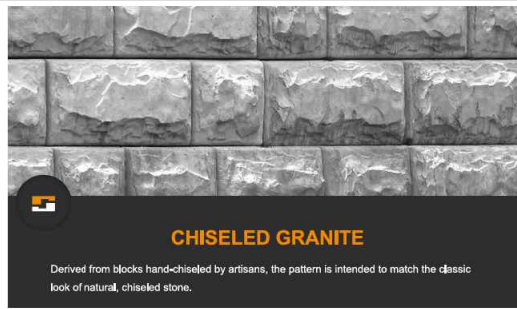


STONESTRONG

CHISELED GRANITE



EXISTING WALL BLOCKS

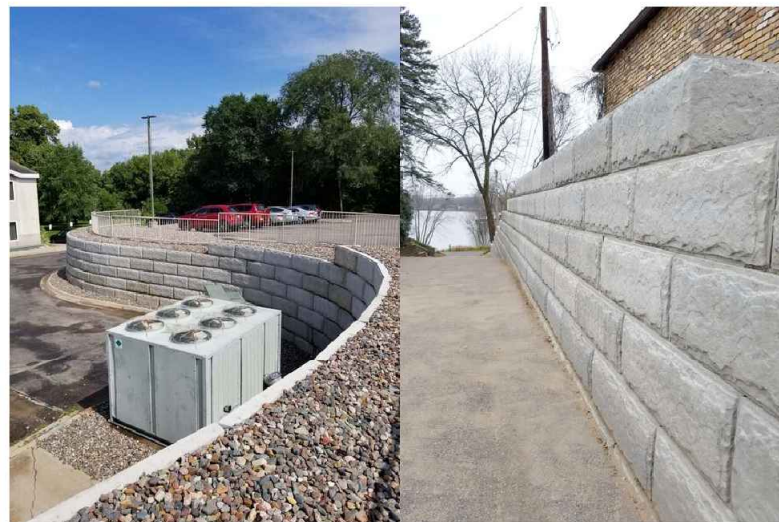
REDIROCK

LIMESTONE



VERSALOK

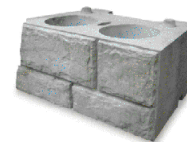
BRONCO



Bronco

When you're getting a retaining job that means a concrete or masonry retaining wall (also, not for floors), weighing in at from 1,225 to 4,000 pounds and displaying up to 14 square feet of face area, Bronco has the feel and volume of solid masonry you can't find elsewhere. The Versalok system is built with up to 10 feet tall with out soil reinforcement, and it easily accommodates geogrid for taller walls. And with a unique natural stone appearance, Bronco is the most attractive large-block system available.

LEARN MORE



PROPOSED EXAMPLE RENDERING



City of Hudson, Columbia County, NY

PROPOSED RETAINING WALL OPTIONS

Ferry St Over CSX/AMTRAK